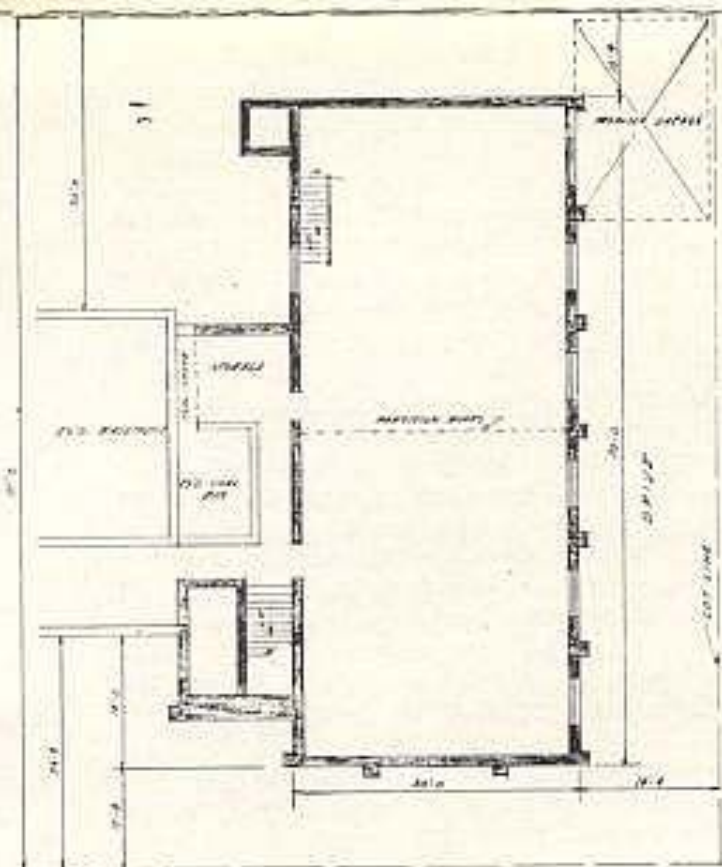
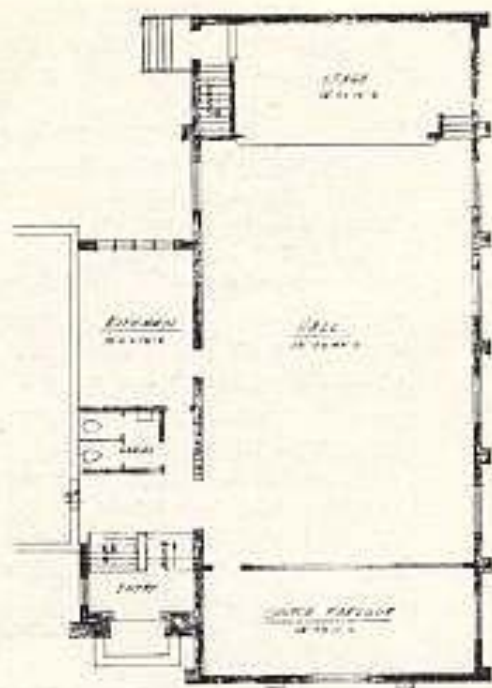


*Our
Future
Church*

The above architect's drawing shows how our church property will appear with the Parish Hall Extension completed.



KENT STREET
BASMENT PLAN
SCALE - $\frac{1}{8}$ " = 1'-0"



MAIN FLOOR PLAN
SCALE - $\frac{1}{8}$ " = 1'-0"

The above drawings are Floor Plans of the Parish Hall as proposed by the Architect.

Why Do We Need It?

St. Matthew's with God's Blessings has grown to the extent that additional facilities are now required to adequately service our members.

1. Our Church and basement are no longer large enough to accommodate our Sunday School Classes.
2. Our Congregation cannot be accommodated at times of special fellowship meetings.
3. The Young people of our Congregation have no satisfactory place for proper recreational activities, plays, etc.

To erect a building as proposed the cost will be in the neighborhood of \$10,000.00.

This project was discussed at the last two annual Congregational meetings and everyone appeared to be in agreement that this expansion is needed.

Before such a project can be started the necessary funds must be available.

How Can We Finance It?

It is proposed to conduct a campaign to canvas every member of our Congregation for a cash donation or pledge to be paid before the end of this year. It is hoped that these cash donations and pledges along with the funds presently on hand will represent twenty-five percent of the cost or \$10,000.00.

Along with a cash contribution every member will be given the opportunity of making loans to the Congregation on demand notes with interest, to be retired out of the Debt Retirement Fund over future years. It is felt that an additional \$20,000.00 can be raised in this way.

This will then leave a balance of \$10,000.00 which can be raised from outside sources.

The interest charges for the first year will be approximately \$1000.00 and will diminish annually as the indebtedness is reduced.

Our Congregation should be able to carry this burden.

We hope this preview of our plans will enable you to prepare to meet the canvassers.

The success of the initial campaign will determine whether or not we can proceed.

The Parish Hall Finance Committee.

SPEAK UNTO THE CHILDREN OF ISRAEL — *that They Go Forward*

Exodus 14:15

In one of the battles of Napoleon Bonaparte the cause for the day seemed hopelessly lost. The great commander turned to his drummer boy and said "Boy beat me a retreat". The lad dared to reply, "Sir, I don't know how. I was never taught to beat a retreat; but I can beat a charge that will make the dead fall into line! I beat that charge at Lodi, I beat that charge at the Pyramids. Let me beat it now!" And without waiting for the word, he beat his charge and over the dead and wounded, over the breastworks and the batterymen, he lead the way to victory.

The current challenge to St. Matthew's is Expansion. There is an urgent need for expansion in Worship, Education, Fellowship and Service. The Lord has opened to us a door of opportunity. We are eager to enter that door. We will enter even though there are obstacles in the way. We plead "Give us the tools that we may do the job". We have the spiritual resources, the Word of God, the Sacraments, the Abiding Christ, but the lack of physical equipment is a handicap. We require a Parish House to round out our equipment to facilitate the carrying out of an expanded service to God and to our fellowmen.

The purpose is not to vie with other churches which are expanding, nor to expand for our own selfish pleasure. The primary purpose is expressed by the Apostle Peter, "that God, in all things, may be glorified through Jesus Christ".

(1 Peter 4:11)

Great power houses have been built at Niagara Falls and along the Ottawa River. Great power houses will rise along the St. Lawrence. The purpose is not to demonstrate great engineering skill, but rather to make possible the fulfillment of a vision, a vision of power going out to great industries which, in turn, will help to make a greater Canada. Jesus said, "All power is given unto me in heaven and in earth, — go ye into all the world". The church is one of God's power houses. Let us respond to this appeal for expansion so that greater spiritual power may enter our own lives, the life of our community, and be transmitted unto the uttermost parts of the world.

YOUR PASTOR